

# Meet the GoPro HERO 10

Only use the GoPro in the protective housing!

## Current Mode & Front Display

Time Lapse Photo / Video / Photo / Resolution, Counter Time / Storage / Files / Battery life...

4

## Top Button

Take Photos + Videos

3



1

2

## Side Button

Long push: ON/OFF  
Short push: Change mode

When the GoPro is OFF, but something COOL shows up...



## QuikCapture Video

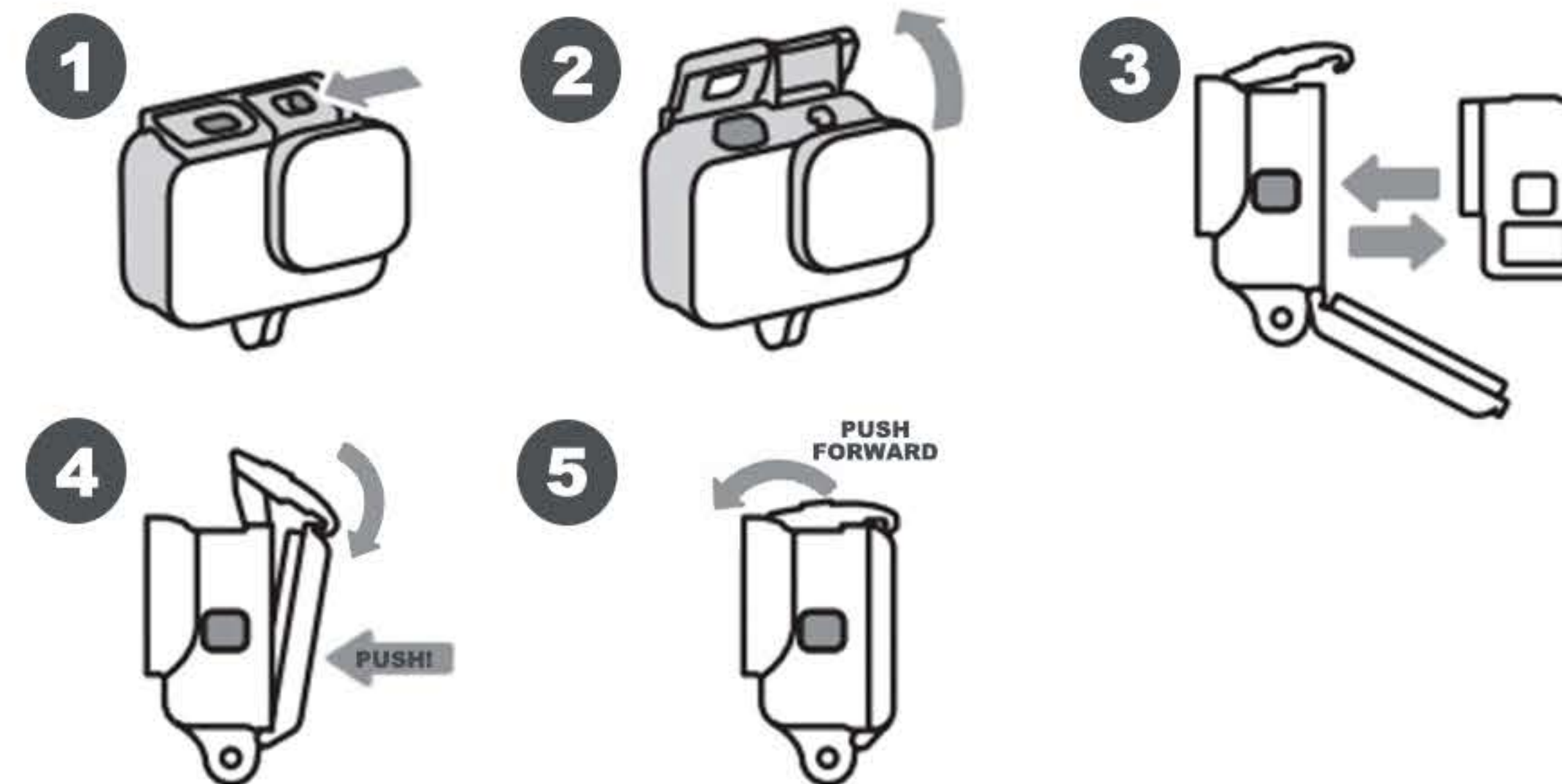
to capture unexpected special moments

Press Top Button (4), the GoPro will turn on and start recording in 3 Secs.

Press (4) again to stop recording, and the GoPro will turn off.

## Opening and Closing The Housing

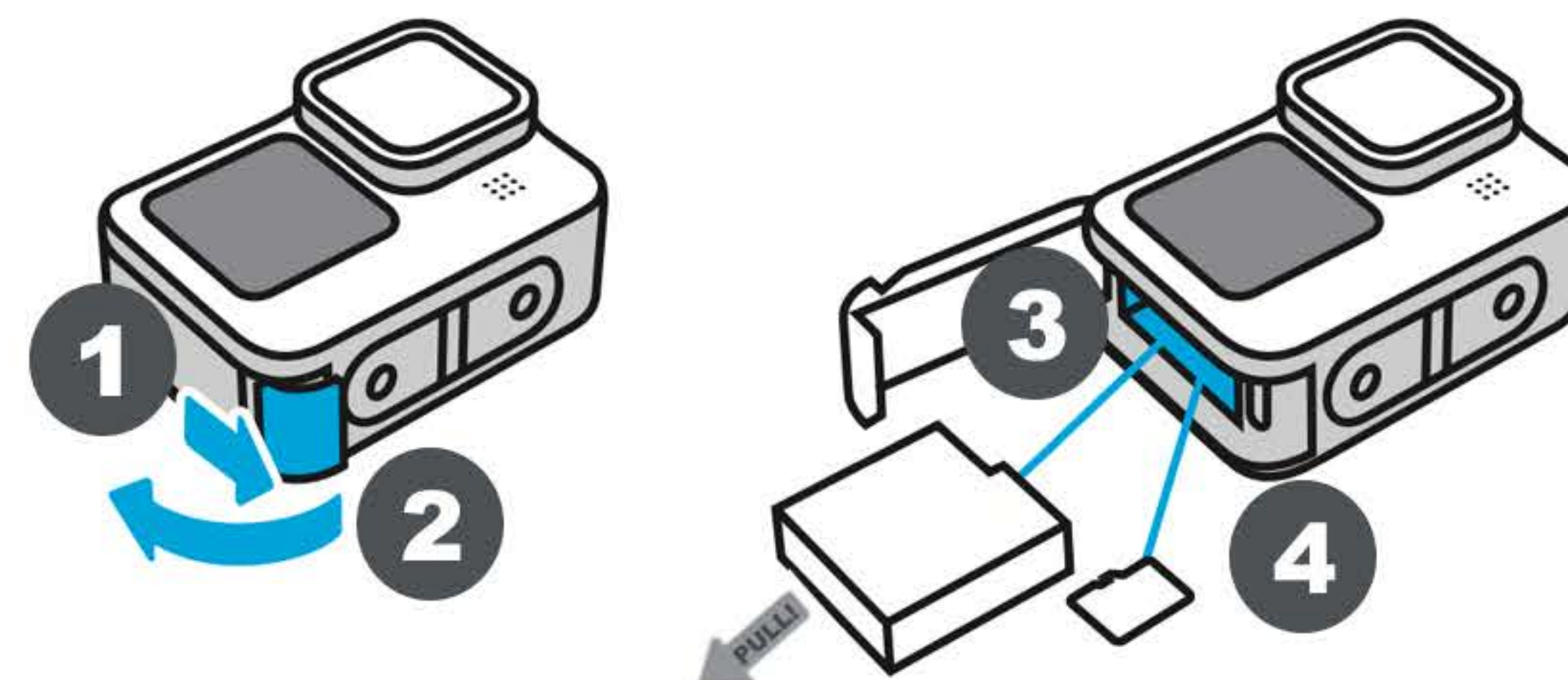
Only do this in a dry area when your hands are dry.



- 1 Push the lock across.
- 2 Unclip the latch from the front of the GoPro.
- 3 Put in or take GoPro out of the housing.
- 4 Push the back door. Attach the latch on the top end of the back door.
- 5 Push the latch forward. Done!

## Change Battery / Swap A Memory Card

Only do this in a dry area when your hands are dry.



- 1 Pull the battery door downward
- 2 Lift the battery door upward
- 3 Pull the battery out of the GoPro, put a new battery in.
- 4 Give the memory card a push, it will come out